

PACCOR UK Ltd

Full Retrofit with Controls and Emergency Lighting

Glowled®



**The future is
brighter with LED**

Project Scope

Existing Lighting	300W LED Highbays
LED Lighting	150/216/314/415W LED Highbays + Emergency lighting
Annual Saving	£82,903 - 76.5% Saving

Paul Mordue - Project manager - and John Quinn, - Engineering Development Manager at PACCOR UK Ltd, saw an opportunity to upgrade their expensive lighting and prepared a business case for the lighting project which was 18 months in the making. Paul and John participated in a post installation interview below:

What lighting challenges were you facing on site prior to the project starting? Describe the facility and space impacted by this project.

The supplier of the previous site lighting system had entered administration. Unfortunately, the manufacturing space at the facility was, therefore, left with no control over the lights which were lit 24/7 at full brightness and no dimming function. With no external support available an urgent solution needed to be researched and found. Glowled were, through an initial diagnostic survey and subsequent planning meetings, able to propose the most suitable solutions available. As part of their proposals, they provided detailed CAD design layouts for PACCOR's consideration along with 3D renders which greatly assisted our understanding of what could be achieved.

Why did you select Glowled's Digital Lumens system? Did you consider any other solutions?

Like all businesses additional quotations and options were sought and whilst the project started as a means to deliver Emergency lighting provision, we quickly realised a full re-fit would enable us to take advantage of the Digital Lumens system's possibilities for greater gains. Whilst the other solutions suggested would have certainly helped, the combination of wireless controls, minimal additional equipment and future-proofing flexibility moved us towards this choice and we were happy we made the decision. With regards Glowled - their history and experience with this system was obvious; they provided relevant and detailed case studies that demonstrated the value proposed and how well the solution worked once installed. This 'ticked all the boxes'.

What benefits have been realised since the installation?

Immediately following the new installation, you could tell the difference in the production and warehouse areas straight away. The lighting was "ten times" better than what we had. It had a big impact on the morale of staff providing improved working conditions.

Is there anything you would have done differently in planning the project?

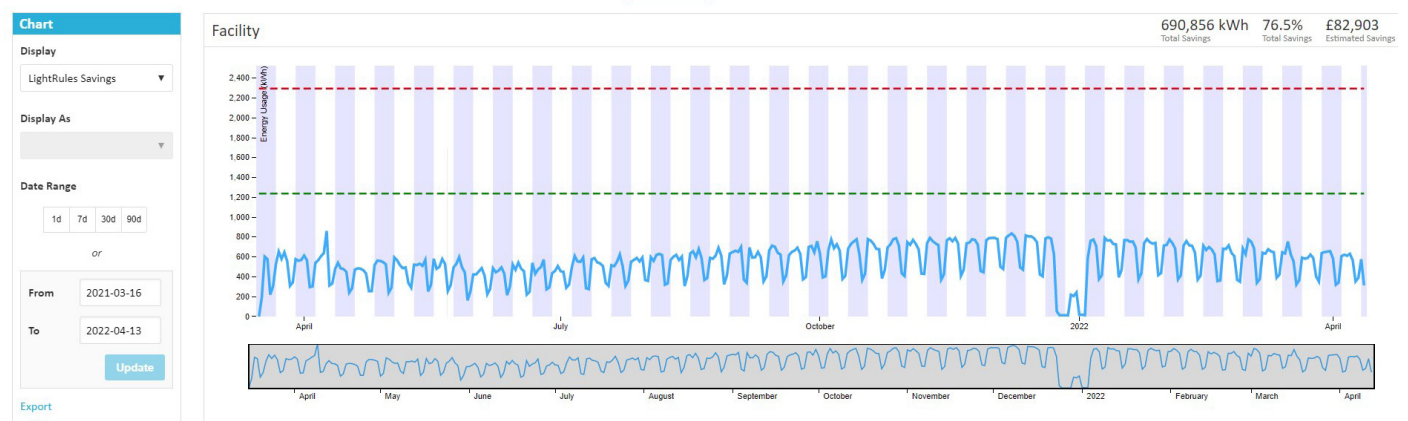
We were fortunate to have begun the planning process early. Due to company re-structuring, a local site was to amalgamate with the Drum Industrial Site. Prior to this work starting we had a tight window of opportunity with no flexibility to install the new lighting, otherwise this would have impacted on the new refit of the production areas. Glowled responded timely to our request completing the project within the time specified.

Has the investment in the project proven to be cost effective and showing the savings discussed/demonstrated?

We track savings every month as part of our contingency savings programme. This ensures the capital investment provides the required longer-term savings and ROI. We are very pleased to report monthly savings of £6,500 which Glowled had forecast following their detailed plans. Understandably, it is important that the evidence from the data provided demonstrates that the investment was worthwhile at number of levels.

Was there adequate training provided to use the new scheme and was it effective?

The training provided was more than adequate to understand and start using the system. Additional support after the installation has been available and very well presented. The hardback manual is comprehensive and a helpful support. The more I use the system the more I have become familiar and confident with its contents and operation.

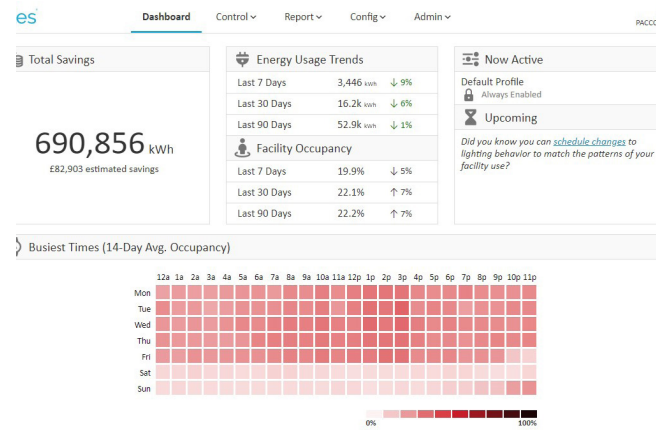


LightRules report showing the Annual Energy Savings by switching from Simple LED lights to a wirelessly-networked, sensor-controlled intelligent LED lighting system. **A 76.5% saving of £82,903 over 13 months.**

Describe how you use the reporting tools, along with any unique insights gained from those reports?

The reports generated within LightRules are really good for quantifying energy usage and more importantly overall savings, compared to the old system we had in place. It has also helped me justify persuading Senior Management to purchase the new system. The heatmaps are also really useful to demonstrate occupancy in various areas of the plant at variable times.

The emergency test reports are essential and really easy to generate and convert to editable data. This also satisfies our legal obligations and health and safety reporting.

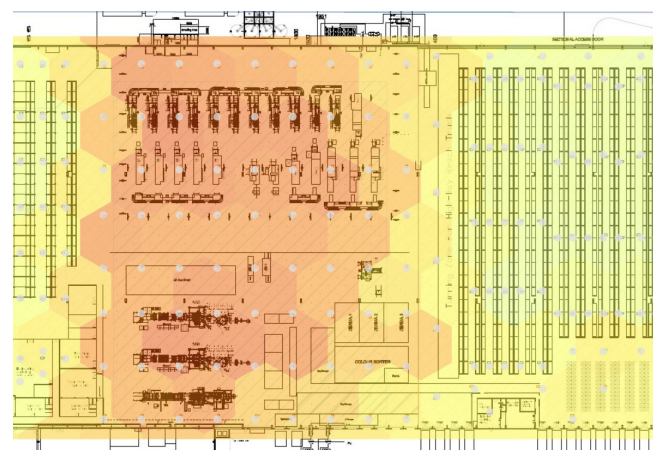


LightRules Dashboard

What can you say about working with Glowled?

Following the previous challenges with our lighting scheme, it was important we had the support of a local designer, supplier and installer that we could trust. The project has been a very positive experience from start to finish. Glowled were very professional and responsive throughout. The installation works did not impact on our production and the team were very tidy. To minimise the disruption on site they were able to work round our production by also working over the Christmas holiday period.

As a company, Health and Safety is a priority at PACCOR. The RAMS information supplied, part of the due diligence process, was comprehensive providing confidence to the Health and Safety manager that Glowled had the necessary level of experience and an excellent understanding of the risks. We appreciated the level of detail supplied. Glowled's aftercare has been excellent resolving any queries as required.



LightRules Occupancy Heatmap

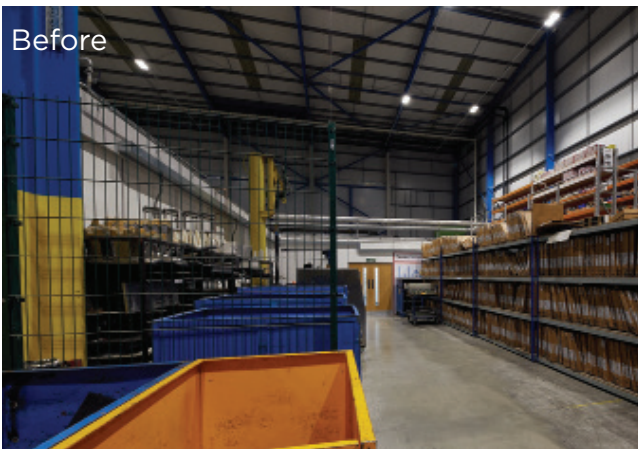
Before



After



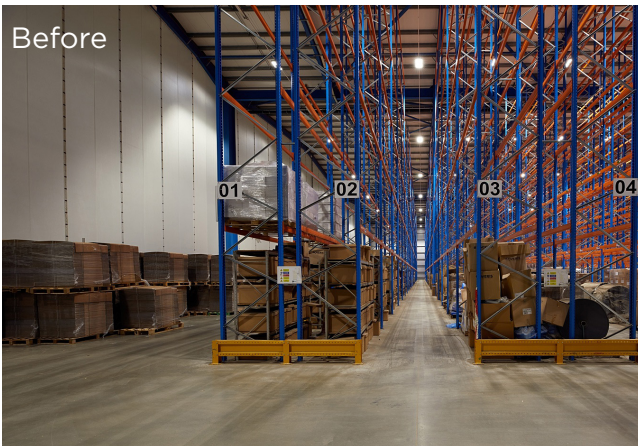
Before



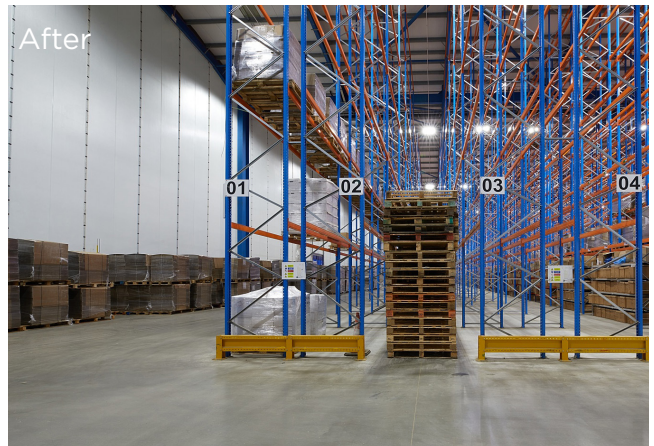
After



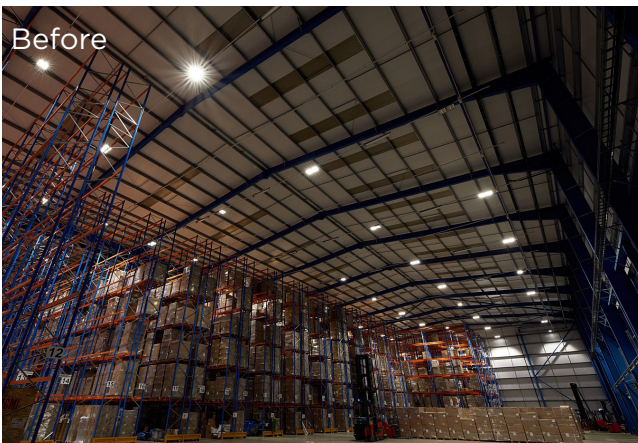
Before



After



Before



After





Want to know more?

Glowled are time and time again proving that the true savings predicted by LED lighting technology can be achieved.

As energy costs continue to rise, there has never been a better time to take control of your costs, and turn your lighting provision into a managed resource.

Contact one of our team today and learn about how this efficient technology can help your facility maximise light and minimise cost.

www.glowled.com
0191 4197361